

# VIKING MECHANICAL TIMER VALVE INSTRUCTIONS

NOTE: For reliable operation, static water line pressure should not exceed 50 PSI. A regulator may be required to reduce static pressure. This unit has an internal filter on the inlet side – you should still flush the line out before connecting to the timer, especially when using a self-tapping saddle valve. The inlet and outlet fittings are indicated on the bottom of the timer.

## STEP #1 - INSTALLATION

1. Choose a location where unit is readily accessible by operator.
2. To use the screw and anchor pack provided, drill (4) 1/4" mounting holes. NOTE: All four mounting holes should be used. When the unit is mounted correctly, the crank is on the left side, inlet on the bottom, and outlet on the top.

## STEP #2 - WATER HOOK UP

- A. Use a self-tapping saddle valve or a tee and threaded reducer fittings to provide a water source for the timer. Run 1/4" O.D. supply tubing from the fresh water supply up to the "IN" side (bottom) of the timer. Before connecting the tubing to the timer, run water through the line to flush out any debris.
- B. Remove the compression nut and while holding the ferrule in place with your index finger, slide the nut down on the 1/4" tubing until it extends 1/8" above the ferrule and sides of the compression nut. Insert into the timer and hand tighten the nut.
- C. Take a length of 1/4" tubing and run it from the top of the timer to your Viking Bowl vacuum breaker. Loosen the nut on the top of the timer and insert the output line down through the nut until it bottoms in the fitting and hand tighten the nut.
- D. **DO NOT USE BRASS FERRULES AND COMPRESSION NUTS – THE FITTINGS ON THE TIMER VALVE ARE DESIGNED TO BE USED WITH THE JACO NUTS SUPPLIED WITH THE TIMER – BRASS FERRULES AND NUTS WILL DAMAGE THE COMPRESSION FITTINGS, DESTROY THE TIMER, AND VOID YOUR WARRANTY.**

## STEP #3 - RUN TIME ADJUSTMENT

NOTE: The markings on the side of the timer are for reference only and do not indicate real time. Minimum run time is approximately 15 seconds; maximum run time is approximately 55 seconds.

- A. To set the run time, loosen the two (2) screws on the side of the dispenser and rotate the crank lever stop ring COUNTER-CLOCKWISE to the desired position and tighten the screws. CAUTION: This is a plastic device - DO NOT OVER TIGHTEN SCREWS.
- B. To allow the end user the option of using the manual button remove the button cover, located on top of the timer.

REMOVING & CLEANING OF THE FILTER - If over time the filter becomes clogged enough to noticeably restrict flow, you can remove and clean it. Straighten a paper clip, using pliers bend one end at a 90 degree angle 1/8" from the end. Without piercing the mesh, pry the filter out by pulling on the rubber seal. Clean and reinstall using the eraser of a pencil.

NOTE: THE TIMER MECHANISM SHOULD NEVER BE OILED!!! \*\*\*\*\* WARRANTY 90 DAYS

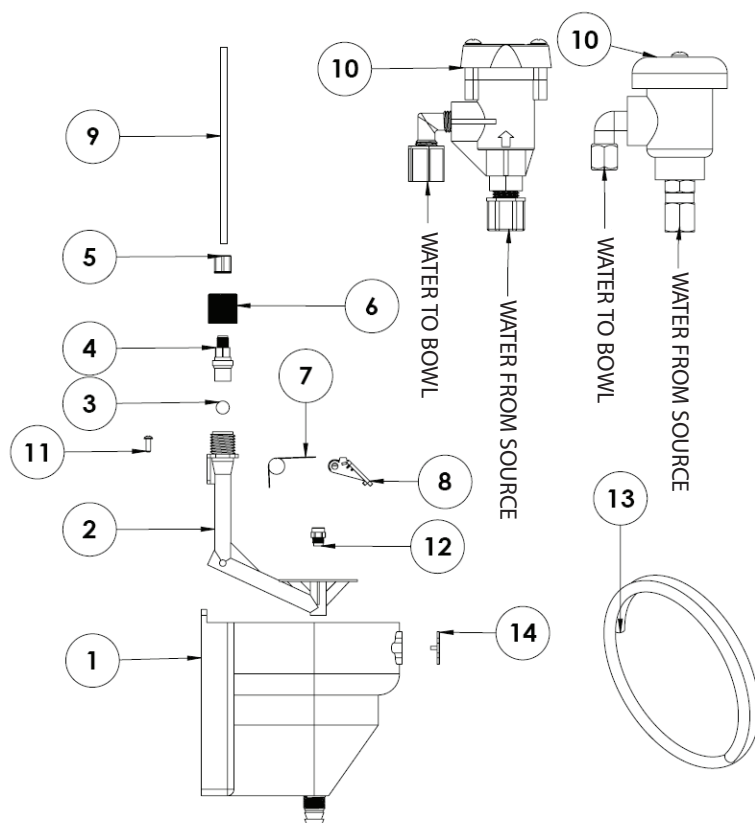
\*\*\*\*\*

#### VIKING BOWL PARTS LIST:

1. MOLDED GREY VIKING BOWL	MOA VBBOWL M70
2. SPRAY ARM WITH BRASS PLUG	VOA INTPLUG V80
3. STAINLESS STEEL BALL	CHA VKBSSBL 000
4. MPT FITTING WITH O-RING	VOA NY11MPT V81
5. 1/4" JACO NUT W/ RING & FERRULE	CHA 1/4JACP 000
6. PLATED BRASS COLLAR	CHA VBBRCOL 000
7. FLIPPER / PADDLE SPRING	CHA SPRAYSP 000
8. SAFETY FLIPPER / PADDLE	MOA VBFLPR M71
9. 7.5" STAINLESS STEEL TUBE	CHA VKBWLTB 000
10. PLASTIC DEMA VACUUM BREAKER	VOA VVBDEMA V19
10. WATTS CHROME 288AC VAC BRK	VOA BRVBWFT V55
11. #8 X 1/2"HI/LOW SS SCREW	CHA 8X1/2SS 000
12. STANDARD NOZZLE (PWD. & SOL)	VOA STDNOZ V71
13. 5' LENGTH OF 5/8" X 7/8" TUBING	CBA 5'#26TB 000
14. BLANK GREY FACEPLATE	MOA VBFCPLT M73

#### NOT PICTURED:

PRIVATE LABEL LOGO FACEPLATE	MOA HOTSTAM N54
COMPLETE SPRAY ARM (INTERNAL ASSEMBLY INCLUDES 2-8 + 12)	VOA VBINTAS V49
POWDER NOZZLE (POWDER ONLY)	VOA POWDNOZ V73
CONE NOZZLE (POWDER & SOLID)	VOA CONENNOZ V70
NDB NOZZLE (FOR LOW PRESSURE)	VOA NDBNOZ V72
ELBOW (BULKHEAD) FITTING COMPLETE	VOA 77ELAS V41
STANDARD HARDWARE BAG	CHH VBHARDW 000
POT AND PAN MECHANICAL TIMER	VOA POT/PAN V03
BATTERY OPERATED TIMER VALVE	VOA POT/BAT V10
VIKING BOWL PRO BALL VALVE OPERATED	VOA PROBOWL V10
HANG UP NOZZLE (FOR BUCKET FILLING AND POT & PAN SINKS)	VOA HANGNOZ V72
MOLDED NUT FOR TOP MOUNTING	MOA 1/2PLAS M17
RUBBER WASHER FOR TOP MOUNTING	CHA 78RBWS 000
MOLDED WASHER FOR TOP MOUNTING	MOA 1-1/2PW M63
MOLDED 77 DEGREE ELBOW ONLY	MOA 77ELB 000
BULK BOWL TUBING (SOLD BY THE FOOT)	CBA #26 000



## VIKING BOWL INSTALLATION INSTRUCTIONS

Choose a location on the wall that will allow gravity feed of the chemical to the dish machine. You don't want to be m Viking Bowl to the bulkhead fitting in the dish machine tank wall. The 5/8" I.D. clear PVC tubing from the Bowl should run down on the side of the dish machine, use 1/4-20 x 3/4" bolts.

ore than 5' from the bottom of the n to the injection point. If mounting

- Use the compression nut (5) on the fitting on top of the Viking Bowl to secure the stainless steel tube to the Bowl. Attach the stainless steel tube to the ELBOW fitting in the side of the vacuum breaker.
- Mount the Viking Bowl using screws and anchors provided. Allow enough room above the bowl to in sert and remove containers of product.
- Run and secure a 1/4" OD water line from the output side of your detergent control solenoid or timer valve to the straig ht fitting in the bottom of your vacuum breaker – this is the vacuum breaker inlet fitting. NOTE: Do NOT tap a hot water line AFTER a booster heater for a feed line to the solenoid and Bowl. The temperature of the water that will flow to the bowl must not exceed 140 degrees Fahrenheit.
- On the side of the dish machine tank, locate or make (with a Greenlee punch) a 7/8" hole for the 77-degree elbow above t he water line. Try to dispense in an area with good water circulation. A good location is across from the inlet to the circulation pump. Avoid installing in th e tank corners. Install the elbow assembly in this hole.
- Attach the clear feed tubing to the bottom of the Viking Bowl. Pull the other end of the tubing in line with the elbow and cut off any extra so the line doesn't sag. Attach it to the elbow.
- Power the detergent dispenser and check for leaks at all connections. Tighten any loose compression nuts. A small tric kle of water from the spray nozzle is normal when the solenoid / timer valve is active and no product container is in place.

#### SPECIFICATIONS & RECOMMENDED OPERATING CONDITIONS

Water Pressure: Minimum 15 PSI / Maximum 40 PSI Dynamic

If necessary, pressure can be adjusted by installing an in-line regulator to control th e water pressure to the Viking Bowl.

Water Temperature: Some solid products are run with cold water. We do not recommend using water that is more than 140 degrees Fahrenheit.

#### Notes:

- The Viking Bowl accepts a standard 6" jug with a 100MM neck finish.
- Colored Viking Bowls are available – call for details.
- Private label logo is available on the Viking Bowl - call for details.
- Viking manufactures screen caps for encapsulated detergent - call for details.

#### Nozzles:

- The Viking Bowl comes with a Standard Spray Nozzle installed. The standard nozzle is used for both powder and solid products
- The Cone Nozzle provides the same spray pattern as the Standard Nozzle but it is cone shaped to shed water and product after feeding is complete.
- The Powder Nozzle provides a low flat spray and should be used with powdered products only.
- The NDB Nozzle is for locations where low water pressure is too low. It has a smaller orifice and will provide a better spray pattern at lower pressures. It will produce lower flow rates than any of the other nozzles.